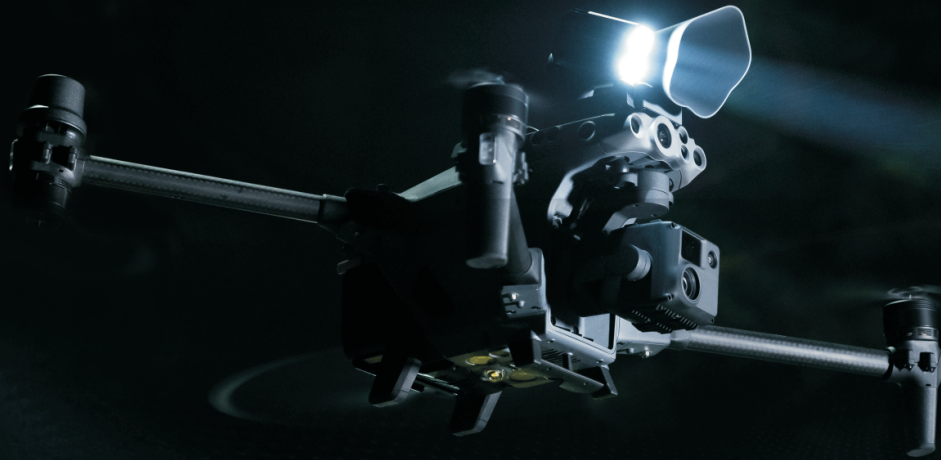




OTG OnTheGo Limited
創動樂有限公司



Note: Products do not include drones



Police



Search&Rescue



Transportation



Power grid



Fire-fight

LP12 Searchlight & Broadcasting System

Technology Through Art

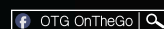
- Two-in-one quick mount and dismount design
- Weigh only 270g, long flight duration
- Effective illumination distance 100m@4.5Lux
- Effective sound distance 200m@74dB

Exclusive Distributor:

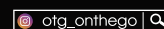


OTG OnTheGo Limited
創動樂有限公司

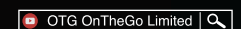
Tel : +852 37278000
Website : www.OTG.com.hk
OTG Store : Store.OTG.com.hk
Email : Info@OTG.com.hk



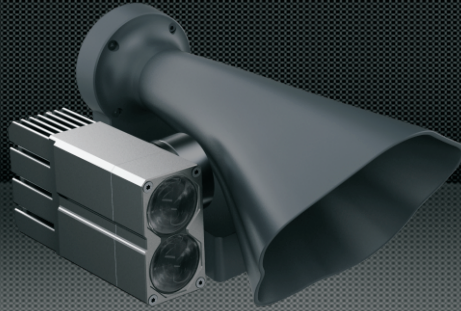
OTG OnTheGo



otg_onthego



OTG OnTheGo Limited



Searchlight & Broadcasting System LP12




The LP12 is a searchlight and broadcasting integrated payload designed specifically for the DJI M30 enterprise drone model. With its streamline design, it pushes the limits of product performance while taking characterized appearance into account, and effectively reduces wind resistance and improves the duration of flight.

The LP12 is the most efficient lighting and broadcasting payload product of czi so far, combining the imaging optics of the Gimbal Light Series, with the LRAD long distance broadcasting technology of the Mega Phone Series, extremely light weight and small size. Weighing only 270g, it has an effective illumination distance up to 100m and an effective broadcasting distance of 200m, which can meet the operational needs of security patrols and outdoor search and rescue scenarios. The LP12 is deeply integrated with the DJI Pilot 2, allowing quick access to all broadcast and light functions, making it more convenient to operate.


Product Advantages



Integration of
sound and light



270
g
lightweight
design



100
m
Effective
illumination distance



200
m
Effective
sound distance

One devices two functions Small and powerful

- Broadcasting and lighting two-in-one design
- Weigh only 270g
- Lightweight
- long duration of flight

Excellent sound and light effects

- LRAD Sound Technology & Optical Imaging
- 120dB Ultra-high sound pressure
- Effective illumination distance up to 100m
- Effective sound distance up to 200m

Bionic Aesthetic Appearance and Excellent Technique

- Unique appearance with morning glory petal design
- Perfect integration of industrial design and production technique

Quick mount and dismount for easy use

- Unique assembly and disassembly design
- OSDK Perfectly adapted to M30

Technical Parameters

Model	LP12			
Electrical interface	DJI OSDK			
Weight	270g(without quick-mount fixture); 283g(with quick-mount fixture)			
Dimensions	L162*W111*H75mm			
Searchlight power	Regular mode:30w Ultra bright mode&Flashing mode:40w			
Speaker power	15W			
Power supply voltage	24V			
Luminous flux	2000lm±3%			
Searchlight FOV	13°			
Illumination distance	150m	130m	100m	50m
Spot diameter	34m	29.6m	22.8m	11.4m
Illuminated area	917m ²	688m ²	407m ²	102m ²
Central illuminance	1.7Lux	2.5Lux	4.5Lux	20Lux
Gimbal movement range	Pitch -120°~+45°			
Maximum sound pressure	120dB			
Effective broadcasting distance/m	200m@74db; 350m@69db			
Broadcasting method	Upload the recording files Play audio file Text To Speech (supports multi-language) Background sound			
Audio formats	mp3/wav/m4a/flac/aac			
App support	DJI Pilot 2			
Operating temperature	-15°C~+40°C			

Warm Tips: The final interpretation of this material belongs to Guangzhou Chengzhi Intelligent Machinery Technology Co.,Ltd. Products are subject to change without notice, please refer to the company official website or the latest information.