

SHARE



SUPERIOR MAPPING CAMERA

SHARE 303S PRO V2

305 MP Five-lenses Oblique Camera

Exclusive Distributor:



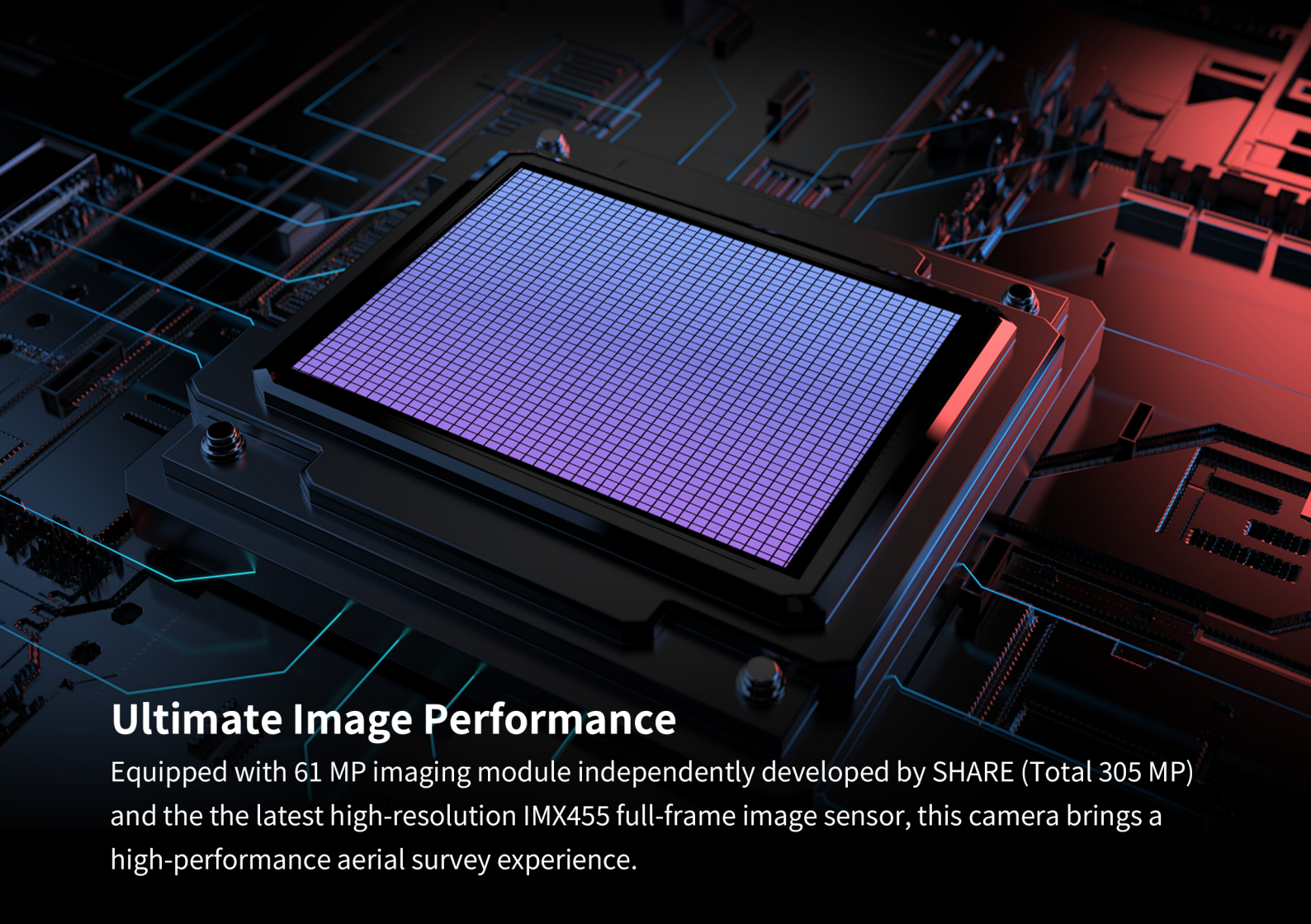
OTG OnTheGo Limited
創動樂有限公司

Tel : +852 3727 8000
Website : www.OTG.com.hk
OTG Store : store.OTG.com.hk
E-mail : Solutions@OTG.com.hk



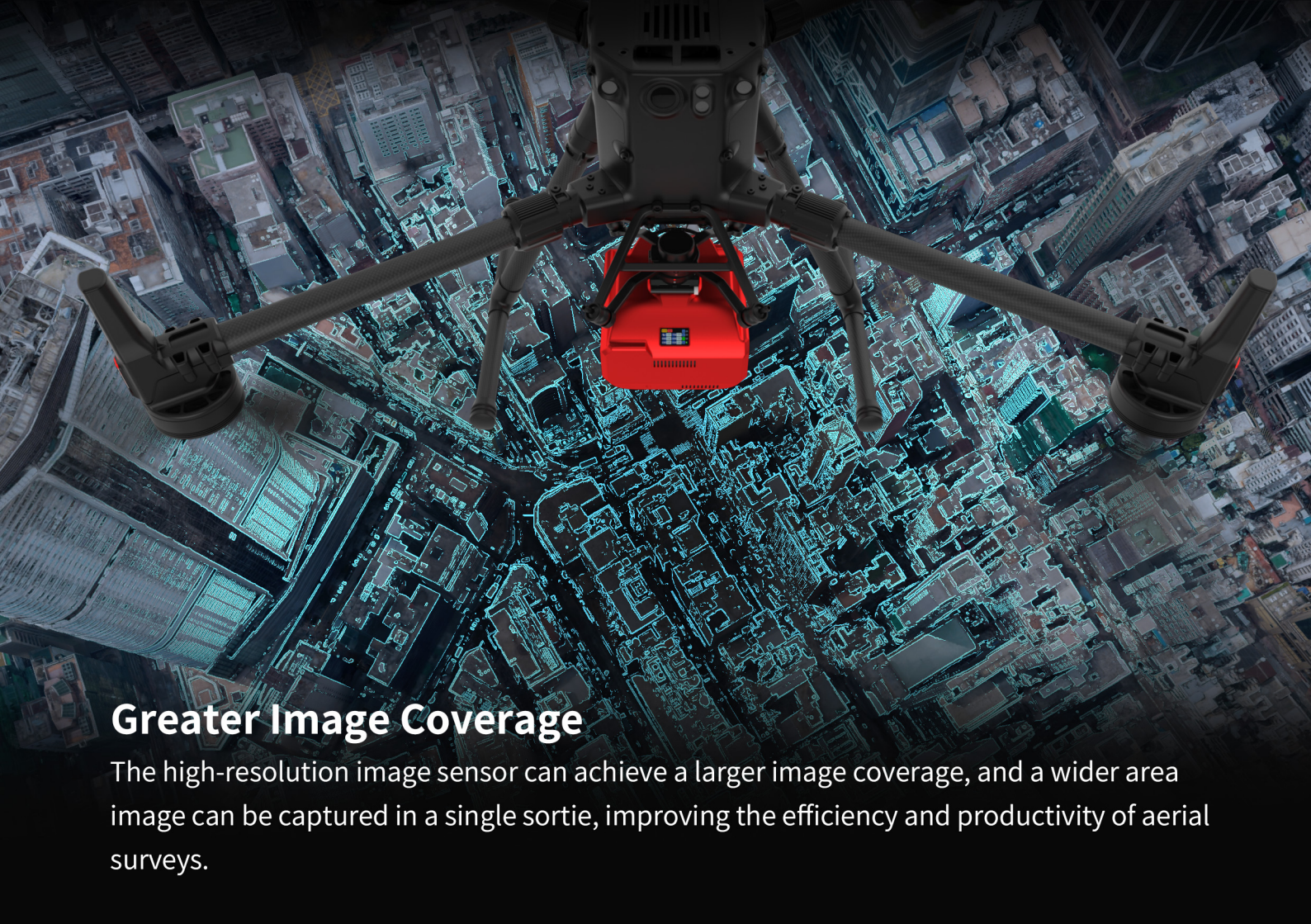






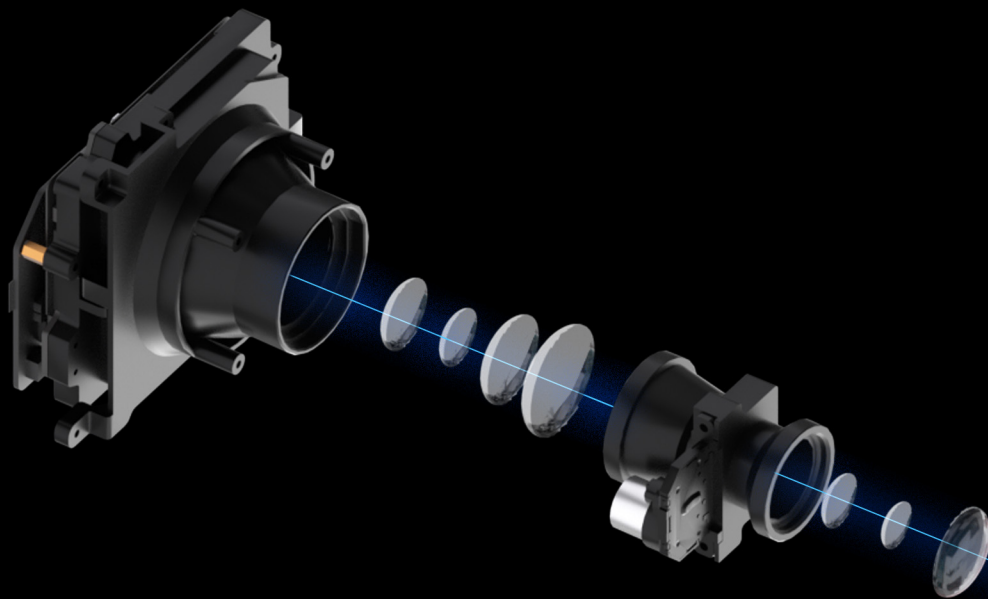
Ultimate Image Performance

Equipped with 61 MP imaging module independently developed by SHARE (Total 305 MP) and the the latest high-resolution IMX455 full-frame image sensor, this camera brings a high-performance aerial survey experience.



Greater Image Coverage

The high-resolution image sensor can achieve a larger image coverage, and a wider area image can be captured in a single sortie, improving the efficiency and productivity of aerial surveys.



Professional Mapping Lens

It adopts SHARE's mature S-ML2.0 special lens for surveying and mapping, integrates multiple LD low-dispersion optics, opens up a new horizon for aerial surveying, and can achieve transparent imaging, ultra-low distortion, and highly restores real scenes.



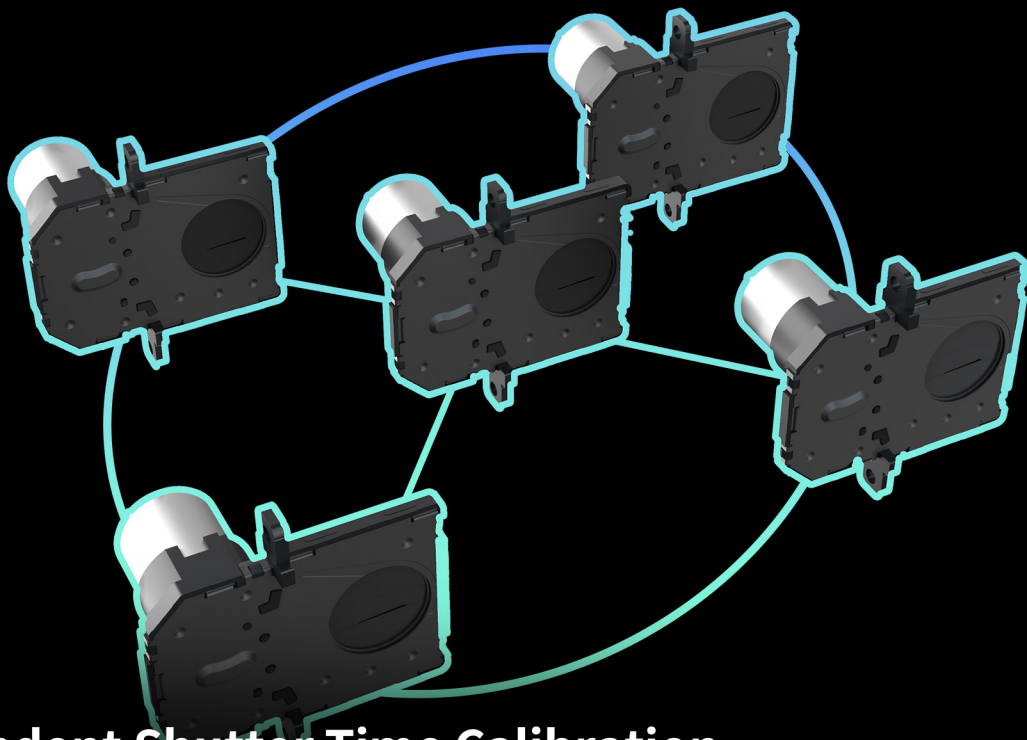
Professional SGS Global Mapping Shutter

The shutter is integrated with KIMOTO high-speed shading blade with a double structure to lower the friction coefficient, reaching 1 million times shutter life and avoiding jelly effect.



Custom Parameters

Parameter adjustment function allows users to be more flexible in different aerial survey tasks, and can adapt to project needs to provide users with efficient and accurate data collection solutions.



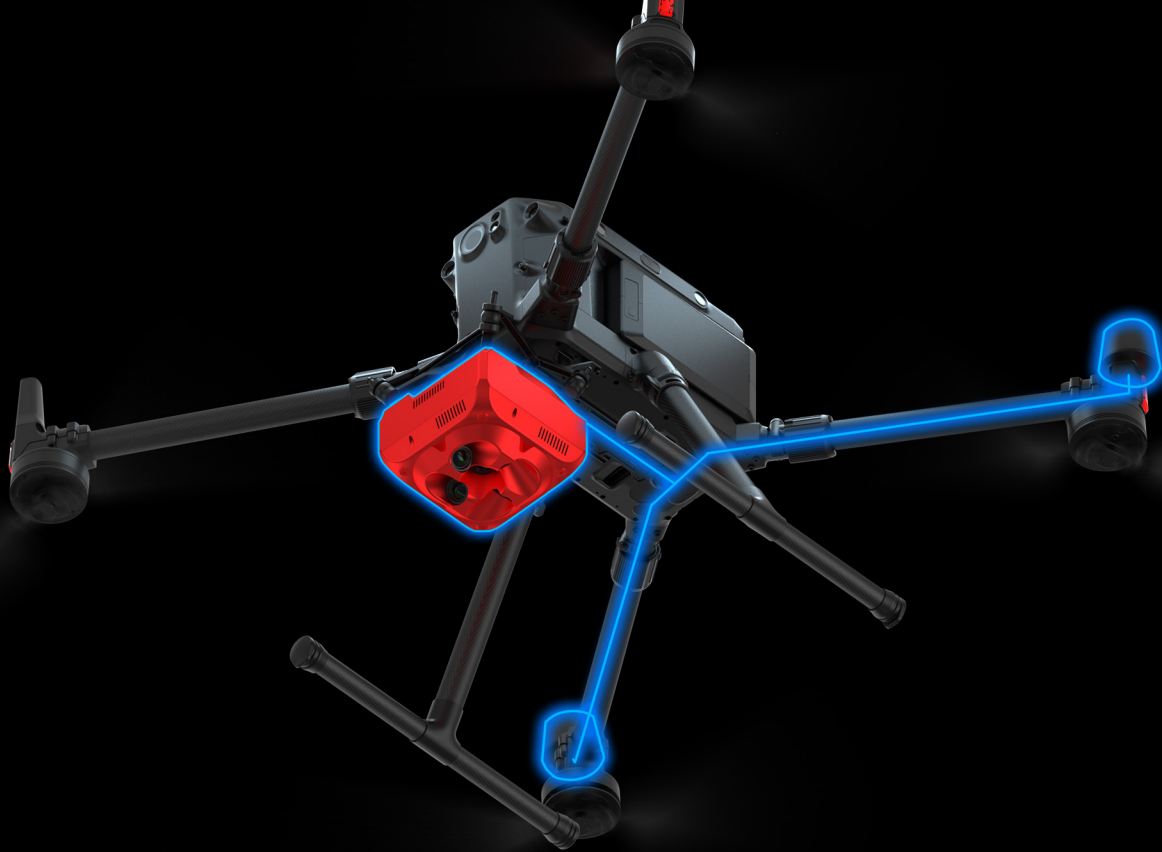
Independent Shutter Time Calibration

Each camera shutter is time-calibrated individually before leaving the factory, and the trigger time error is controlled at the microsecond level to ensure that the triggering of the five-view camera is synchronized.



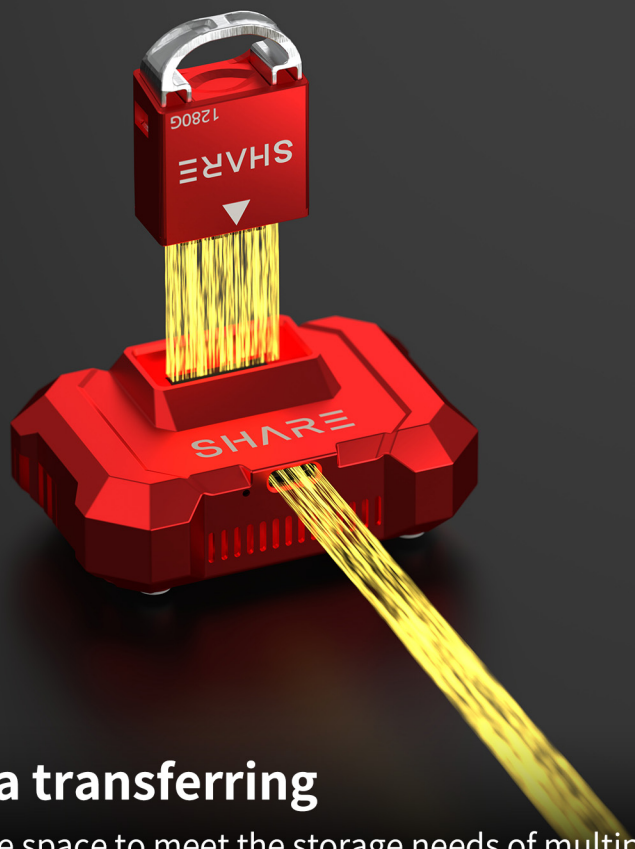
Auto Adjust White Balance

The white balance is calibrated independently during camera module production, combined with the excellent color correction algorithm of SHARE, ensuring the stable quality of aerial photos and uniform image color.



1:500 GCPs Free

Microsecond-level time synchronization among camera, drone, RTK and the flight control, realizing accurately read UAV POS information and write photos in real time. No manual setup and deployment of control points is required, to reduce preparation work and labor costs.



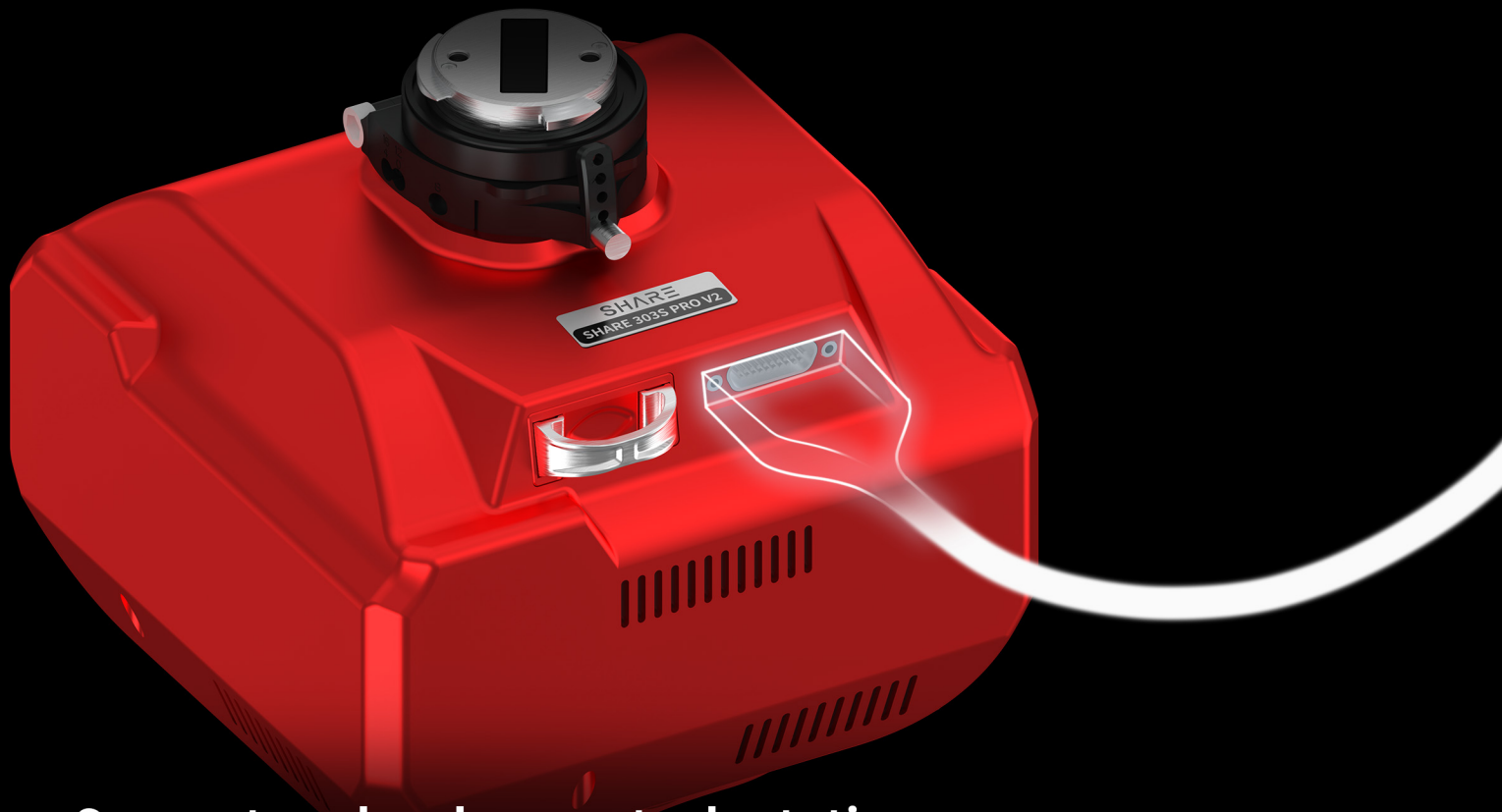
High efficient data transferring

Standard 1280G data storage space to meet the storage needs of multiple sorties in large projects, combined with 600MB/S star-speed transmission, greatly enhancing the efficiency of data processing.



Lightweight energy-saving loads

Advanced technology integration and production process to keep the weight of the camera to a minimum. The lightweight structure is easily adapted to fixed-wing, multi-rotor and other drones, and save battery power.



Support re-development adaptation

Compatible with a variety of open-source flight control systems, the camera can be re-developed to realize monitoring camera operation status, controlling camera, data transmission, image transmission, GCPs free and other functions by developing the SDK, realizing functional adaptation for multiple mounting platforms.

Camera Parameters

Name	SHARE 303S PRO V2
Size	130*130*129.5mm
Weight	886g
IP Rate	IP5X
Compatible Platform	DJI M300 RTK、 Other multi-rotor and fixed-wing UAV
Power Supply	External Power supply with DC 12-50V
Interface	DJI Skyport interface & General interface
Effective Pixels	61 million (total 305 million pixels)
Sensor Size	Sensor size: 36×24mm(Full-frame); Pixel size: 3.76μm
Image Resolution	9552 x 6368 px
Acquired Data	Images including GPS and camera parameter / POS file
Focal length	Fixed focus Side view:56mm ,Top-down view: 40mm
Tilt Angle	45 degree
ISO Option	50-200,50-400,50-640,50-800,50-1000,50-1600
Shutter Speed	1/500,1/640,1/800,1/1000,1/1250
Shutter Life	S-GS Global Shutter; Shutter warranty life 500,000 times
Aperture Size	Fix to F5.6
Storage	Removable storage module with capacity of 1280GB
Image Transmission	Dynamic bitstream HD down-view image transmission
Exposure Interval	≥1s
Parameter Adjustment	Support adjusting ISO, white balance ,color mode and shutter speed through DJI Pilot
Data Copying Speed	600MB/s
Operating Mode	Flight Controller Trigger, Isometric Trigger, and Isochronous Trigger

SHARE